



International Academy  
for Digitalization & Management



# AI-Driven Project Management

## Integrating Artificial Intelligence into PMP® & PRINCE2® Practice

Enhance planning, risk management and decision-making through responsible AI integration.



2026



8 CPD HOURS · PDU SELF-REPORTING ELIGIBLE

IADM LTD  
Suite 10, Capital House 61 Amhurst Road London E8 1LL United Kingdom



# Table Contents

|   |    |
|---|----|
| <u>Why AI Is Reshaping Project Management Now</u>                 | 03 |
| <u>The Training Overview: Turning AI Into a Project Advantage</u> | 04 |
| <u>What You Will Learn: Practical AI Use in Real Projects</u>     | 05 |
| <u>Outcomes That Matter: Skills You Can Apply Immediately</u>     | 06 |
| <u>Accreditation, PDUs &amp; Professional Recognition</u>         | 07 |
| <u>Participation &amp; Pricing Options</u>                        | 08 |
| <u>Expert Leadership, Format</u>                                  | 09 |
| <u>Contact Us</u>   | 10 |

# Why AI Is Reshaping Project Management Now



Artificial intelligence is rapidly transforming how projects are planned, monitored, and delivered. AI-supported forecasting, reporting, and decision tools are becoming standard in modern project environments. Project managers are therefore expected to integrate AI effectively while maintaining governance, transparency, and professional judgement. Traditional methodologies such as PMP® and PRINCE2® remain essential, but must now be complemented by AI-enabled practices.

This training addresses this shift by equipping project professionals with the skills needed to apply AI confidently, manage risks, and retain control in AI-supported project delivery.

# Training Overview: Turning AI Into a Project Advantage

This training provides a practical introduction to AI in project management, focusing on:

- AI fundamentals for project managers
- Understanding core AI concepts and their relevance to PMP® and PRINCE2® practices
- AI across the project lifecycle
- Applying AI to planning, scheduling, risk management, and monitoring
- Risk, governance and compliance
- Responsible AI use, GDPR considerations, and alignment with the EU AI Act
- Traditional, agile and hybrid projects
- Integrating AI into different project delivery approaches
- Human oversight and professional judgement
- Understanding AI limitations and maintaining control in AI-supported projects

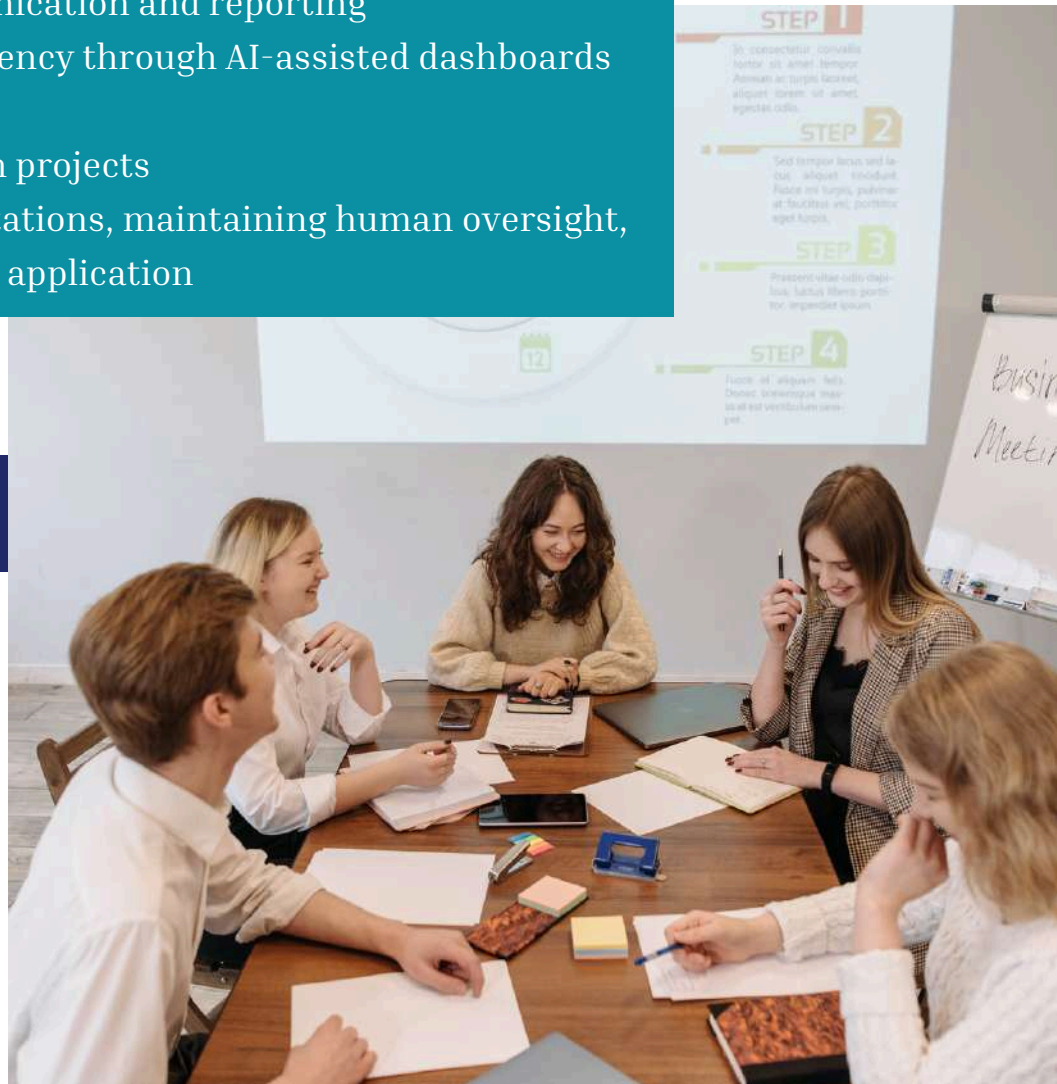
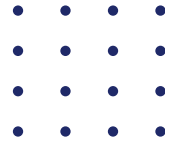


**Our Vision**

*Empowering responsible leadership in the digital age*

# What You Will Learn: Practical AI Use in Real Projects

- AI-supported project planning
- Improving schedules, forecasts, and resource allocation through data-driven insights
- Risk identification and mitigation
- Using AI to detect early warning signals and assess project risks proactively
- Decision support in complex projects
- Applying AI-generated insights to support informed, timely project decisions
- Stakeholder communication and reporting
- Enhancing transparency through AI-assisted dashboards and reporting tools
- Responsible AI use in projects
- Understanding limitations, maintaining human oversight, and ensuring ethical application





# Learning Outcomes & Target Audience

After completing this training, participants will be able to:



- Apply AI tools to support project planning, monitoring, and decision-making
- Identify and manage project risks using AI-supported insights
- Integrate AI responsibly within established project management frameworks
- Maintain governance, transparency, and human oversight in AI-enabled projects
- Communicate AI-driven insights effectively to stakeholders



This training is designed for:

- Project managers and programme managers
- PMO professionals and project leads
- Consultants and delivery managers
- Professionals working with PMP®, PRINCE2®, or hybrid methodologies

# Accreditation, PDUs & Industry Recognition

The training is CPD-accredited and awards 8 CPD hours, supporting recognised standards of continuing professional development (Member No 021006).

*In line with the Project Management Institute (PMI) Continuing Certification Requirements (CCR), one hour of structured, instructor-led learning corresponds to one Professional Development Unit (PDU). PDUs are self-reported by certification holders in accordance with PMI's CCR requirements.*

*Source: PMI Continuing Certification Requirements (CCR) Handbook.*

IADM is a recognised cooperation partner of international higher education institutions, including FOM University of Applied Sciences for Economics and Management (Germany), and holds institutional recognition by Educating Excellence (UK). All training content is developed and delivered under structured quality assurance processes, ensuring regulatory relevance, academic credibility, and verifiable, audit-ready evidence of professional development.



# Participation & Pricing Options

1:1 / bespoke training

£895 per person

- Tailored AI application for your projects
- Advanced decision-making & risk control
- Governance, ethics & professional standards in practice

Group Training (2–5 Participants)

£495 per participant

- Shared understanding of AI in project management
- Practical tools for planning, risk and delivery
- Responsible AI use and team governance

Organisation-wide Training (7+ Participants)

Custom offer available

- Scalable AI adoption across projects
- Organisation-wide governance and alignment
- Tailored delivery for enterprise needs

Delivery: Live virtual (Zoom) | On-site on request · 8 CPD hours awarded ·  
VAT: Not applicable

# Programme Leadership & Expert Faculty



## Dr. Nurgül Aslan CEO & Founder

Dr. Nurgül Aslan is the Founder and CEO of the International Academy for Digitalization & Management (IADM) and provides strategic and academic oversight for this training. Her expertise lies in governance, compliance, quality assurance, and executive education, ensuring alignment with recognised professional and CPD standards. She oversees the training's structure, relevance, and quality assurance.



## Ahtisham Qureshi Lead Trainer

Ahtisham Qureshi is a senior project and programme management professional with over 14 years of experience leading large-scale digital, AI, and transformation initiatives across Europe and the Middle East. A PMP®-certified professional and Six Sigma Black Belt, he has delivered complex, multi-million-pound projects in regulated sectors including telecommunications, banking, and insurance. His focus is on AI-enabled project delivery, governance, and risk control, translating strategy into measurable outcomes.

*(Learn more about Ahtisham: <https://goto-certify.com/about/>)*



# IADM

International Academy  
for Digitalization & Management

## Contact Us

IADM Ltd

Suite 10, Capital House

61 Amhurst Road

London E8 1LL

United Kingdom

Company No 16931324

IADM Ltd

Gereonstraße 18-32

50670 Köln/Cologne

Germany

[www.iadm.academy](http://www.iadm.academy)

[enquiry@iadm.academy](mailto:enquiry@iadm.academy)

+44 7347 588566 United Kingdom

+49 1511 5263129 Germany/Europe

